

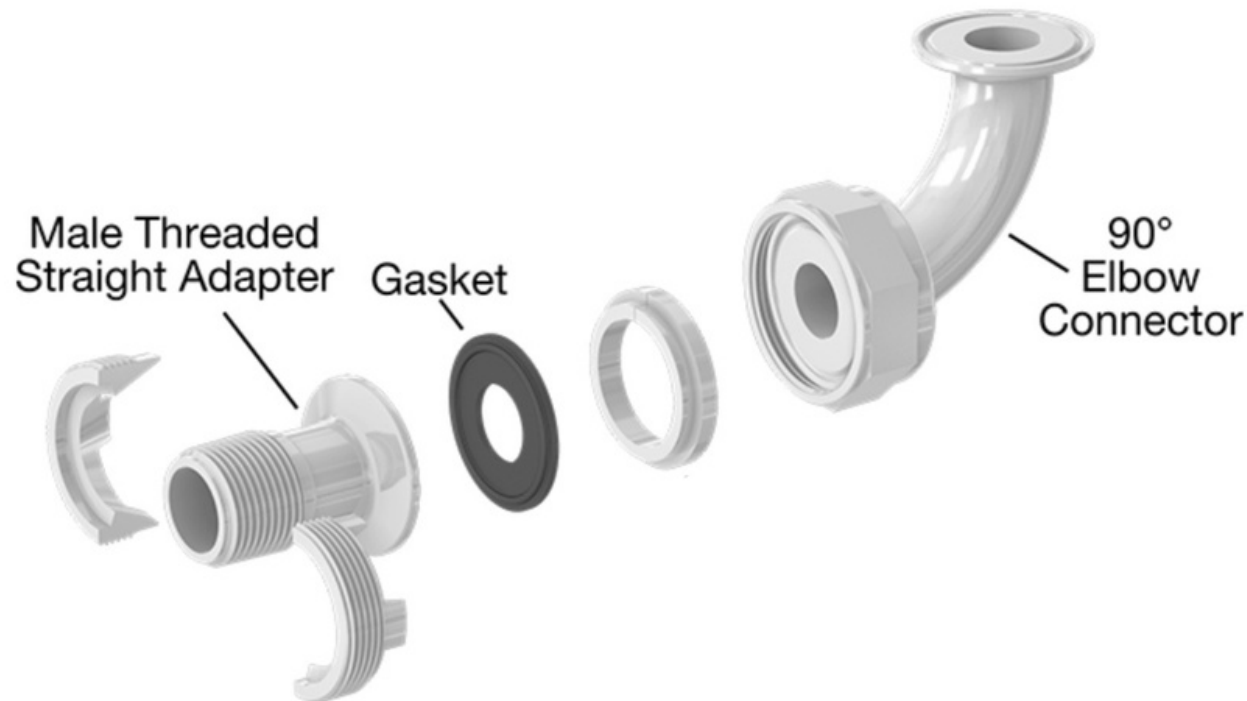


Fluid Path Products

**Safety. Repeatability. American Made.**



## **POLYMER FITTINGS FOR HIGH PURITY APPLICATIONS**



**CAN BE USED WITH DAIRY, WATER, OR OTHER LIQUIDS  
TEMPERATURE RANGE FOR FITTING: -40° TO 170° F, (NOT GASKETS)**



# HOSE BARB FITTINGS

## MALE NPT ADAPTERS



## FEMALE NPT ADAPTERS



<p><b>Polypropylene TC x Male National Pipe Thread Adapters</b></p>	<p><b>Tri-Clamp X Male NPT Adapters:</b>  <b>Sizes Available: TC- 1/2"-2" X MNPT- 1/8"-1"</b></p>
<p><b>Polypropylene TC x Female National Pipe Thread Adapters</b></p>	<p><b>Tri-Clamp X Female NPT Adapters:</b>  <b>Sizes Available: TC-1/2" X FMNPT-1/8"-1"</b></p>
<p><b>PVDF TC x Male National Pipe Thread Adapters</b></p>	<p><b>Tri-Clamp X Male NPT Adapters:</b>  <b>Sizes Available: TC- 1/2"-2" X MNPT- 1/8"-1"</b></p>
<p><b>PVDF TC x Female National Pipe Thread Adapters</b></p>	<p><b>Tri-Clamp X Female NPT Adapters:</b>  <b>Sizes Available: TC-1/2" X FMNPT-1/8"-1"</b></p>



## 90 DEGREE ELBOW CONNECTORS



<b>Polypropylene 90 Degree Tri-Clamp Elbows</b>	<b>Sizes Available: 3mm ID- 1 1/2"ID; TC Ends-1/2"-1 1/2"; Tangent Lengths -Call for Quote</b>
<b>Polypropylene 45 Degree Sanitary Flange Elbows</b>	<b>Sizes Available: 3mm ID- 1 1/2"ID; TC Ends-1/2"-1 1/2"; Tangent Lengths -Call for Quote</b>



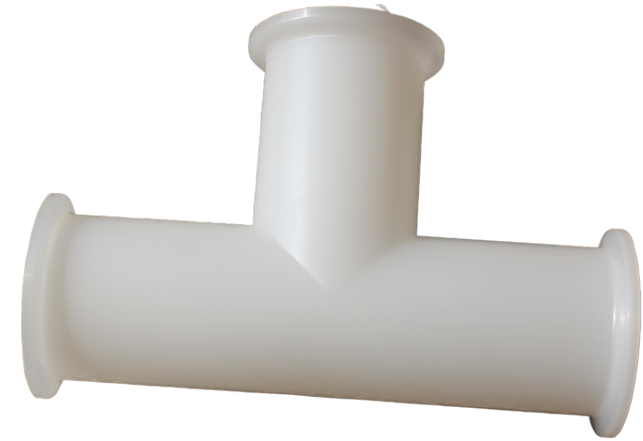
# TRI-CLAMP END CAPS



<b>Flat Polypropylene End Caps</b>	<b>Sanitary Tri-Clamp Flat End Cap Sizes Available: 1/2"-8"</b>
<b>Flat PVDF End Caps</b>	<b>Sanitary Tri-Clamp Flat End Cap Sizes Available: 1/2"-8"</b>
<b>Flat Polysulfone End Caps</b>	<b>Sanitary Tri-Clamp Flat End Cap Sizes Available: 1/2"-4"</b>



# TEE'S



<b>Polypropylene Tri-Clamp Tee's</b>	<b>Sizes Available: 3mm ID- 1 1/2" ID; TC Ends-1/2"- 1 1/2"</b>
<b>Polypropylene Tri-Clamp Short Bull Tee's</b>	<b>Sizes Available: 3mm ID- 1 1/2" ID; TC Ends-1/2"- 1 1/2"+C74:D79</b>
<b>Polypropylene Sanitary Flange Reducing Tee's</b>	<b>Sizes Available: Mainline- 3/4"-1 1/2" X Branch-1/4"-1" Please call for Quote</b>
<b>PVDF Sanitary Flange Reducing Tee's</b>	<b>Sizes Available: Mainline- 3/4"-1 1/2" X Branch-1/4"-1" Please call for Quote</b>



# **POLYMER TECHNOLOGIES FOR HIGH-PURITY PROCESSES**

***IN-HOUSE ENGINEERING:*** OUR TEAM HAS YEARS OF FULLY PERFORMING AND CONTROLLING THE DESIGN AND DEVELOPMENT FROM OUR COMPOUNDS TO OUR FINISHED PRODUCTS

***IN-HOUSE TOOLING DESIGN & DEVELOPMENT:*** FPP DESIGNS OUR PRODUCTION TOOLING INHOUSE, ENABLING US TO QUICKLY SERVICE A PRODUCT FOR YOUR APPLICATION

***IN-HOUSE PRODUCTION:*** WE PRODUCE POLYMER PRODUCTS OF ALL TYPES IN BOTH OUR TEXAS AND NEW JERSEY FACILITIES. THIS GIVES US THE BEST CHAIN OF CUSTODY IN THE INDUSTRY. IT ALSO ENABLES US TO INNOVATE AND DELIVER PROBLEM SOLVING POLYMER PRODUCTS FROM CONCEPT TO REALITY.

**OUR COMBINATION OF BIOTECH, PHARMACEUTICAL AND FOOD PROCESSING KNOWLEDGE PUTS US FIRST IN SERVICING THE INDUSTRY THE WAY IT SHOULD BE SERVICED WITH THE HIGHEST QUALITY AND PROCESS CONTROLS. SINCE THIS IS DONE IN-HOUSE, WE ACHIEVE BRINGING FINISHED PRODUCTS TO MARKET WITH THE GREATEST SPEED AND EFFICIENCY.**

